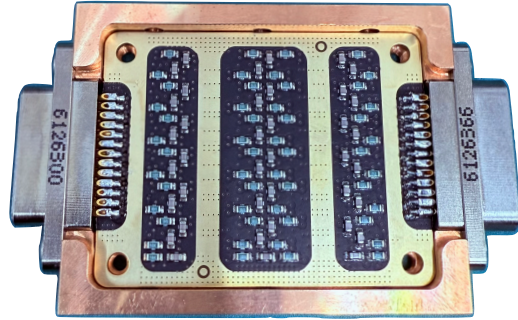
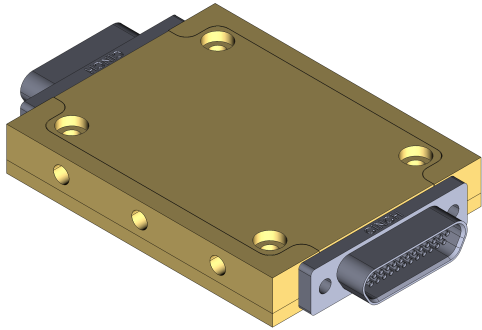


Cryogenic RC Filter



FEATURES

- Designed for operation from room temperature down to mK
- Steep roll-off ≥ 50 dB/decade from 100 kHz to 10 MHz
- Typical transmission $S_{21} \leq -80$ dB from 10 MHz to 1 GHz (typical, per line)
- 25 lines via 25-pin Micro-D connectors
- Housing: C1020 oxygen-free copper (99.96%), with optional gold plating
- Size: 50 mm \times 30 mm \times 8 mm
- 3 \times M3 mounting holes; 15 mm center-to-center
- Applications: Low-noise DC bias / gate lines and sensor wiring in cryostats; suppression of RF pickup on low-frequency lines

ELECTRICAL SPECIFICATIONS

- Symmetric 3-stage RC low-pass filter (RC—RCR—CR) on 6-layer PCB
- Customizable component values (three common configurations shown)

Type	R ($\times 4$)	C ($\times 3$)	Nominal -3 dB cutoff
1	100 Ω	150 pF	2 MHz
2	100 Ω	1.5 nF	200 kHz
3	100 Ω	15 nF	20 kHz

